



## **WE EXTEND YOUR 2G, 3G, 4G, 5G SIGNAL, TO TOUCH THE UNTOUCHED.**

Shenzhen ATNJ Communication Technology Company focuses on the production and development of micro power signal booster, wireless signal repeater, Indoor Signal Distribution System and OEM / ODM customization. With the development of facilities and technology, ATNJ expands its business scope to cooperate with signal operators, provide signal coverage solution for large area like residential area, office building, supermarket, underground garage and rural areas.

In 2021, 5G signal booster was developed and put into market successfully. In future, easier use and more functional signal boosters have being developed.

## Features

---

- . LCD Display Repeater Installation Instruction
- . Display Real-Time Signal Strength
- . Automatic Dormancy
- . Equipment Fault Alarm
- . Installation Error Alarm
- . Auto Level Control ALC
- . Manual Gain Control MGC
- . Auto Isolation Detection Alarm AID
- . Easy to Install
- . Simple and Intelligent operation

## Applications

---

To expand signal coverage or fill signal blind area where 2G 3G 4G or 5G signal is weak or unavailable.  
Indoor Applications: Hotels, exhibition centers, basements, shopping malls, offices, parking lots, ... ..

# Digital Band Selective Repeater

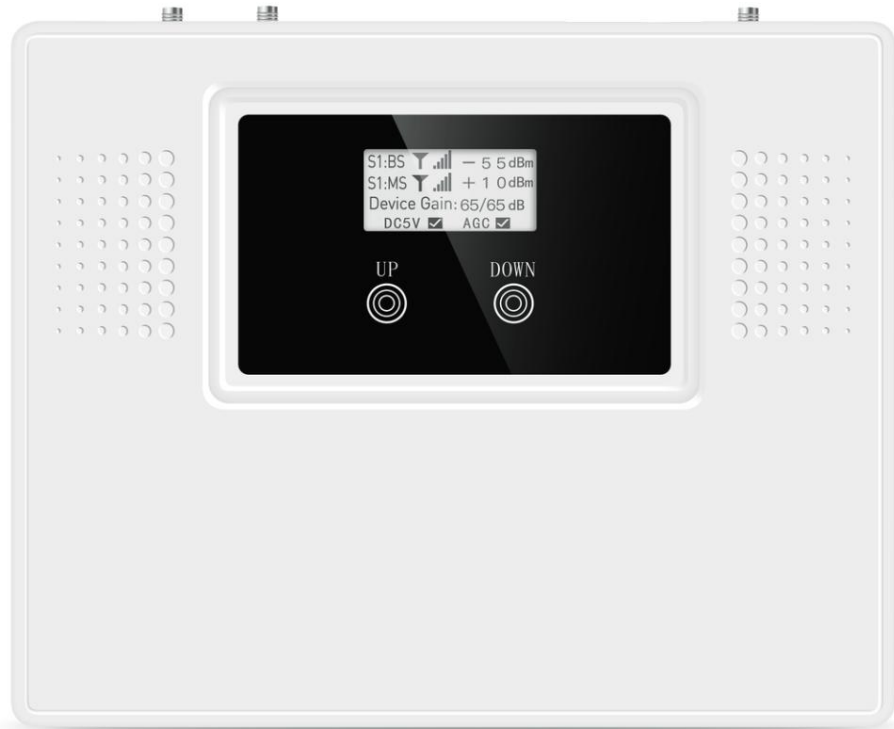


Gain	Output power
70dB	17-20dBm

Model number	Frequency
DS-GDW	900+1800+2100MHz
DS-GD	900+1800MHz
DS-GW	900+2100MHz
DS-GL	900+2600MHz
DS-D	1800MHz
DS-W	2100MHz
DS-L7	700MHz
AS-700	700MHz
AS-E900	EGSM900MHz

2022 New Upgrade Customized Band Selective Signal Repeater for professional Engineering and Mobile Operator use. It with WIFI monitoring and control function and could cover 100-300sqm (standard kit), and could support max 2 to 3 indoor antennas to cover over 800sqm.

# Dual 5G Signal Repeater



Gain	Output power
70dB	20dBm

Model number	Frequency
FG-D1	Band 3 + N41 1800MHz + 2600MHz
FG-D7	Band 3 + N77 1800MHz+customized 3300-4200MHz
FG-D8	Band 3 + N78 1800MHz+customized 3300- 3800MHz

ATNJ develops 5G signal repeater with Band 3, N41, N77, N78

# Single Band Signal Booster



Gain	Output power
70dB	20dBm

Model number	Frequency
AS-800	800MHz
AS-C	850MHz
AS-G	900MHz
AS-AWS	1700/2100MHz
AS-D	1800MHz
AS-P	1900MHz
AS-W	2100MHz
AS-700	700MHz
AS-E900	EGSM900MHz

Micro power smart single band signal repeater for residential use with WIFI monitoring and control function, it could cover 100-300sqm (standard kit), and could support max 2 to 3 indoor antennas to cover over 800sqm. Analog repeater and Digital repeater for choice.

# Single Band Signal Booster



Gain	Output power
80-85dB	27dBm

Model number	Frequency
MS-L800	800MHz
MS-C	850MHz
MS-G	900MHz
MS-D	1800MHz
MS-W	2100MHz
MS-2600	2600MHz

Middle power single band signal repeater for residential use. It could cover 300sqm (standard kit), and could support max 8 to 12 indoor antennas to cover over 2000sqm.

# Single Band Signal Booster

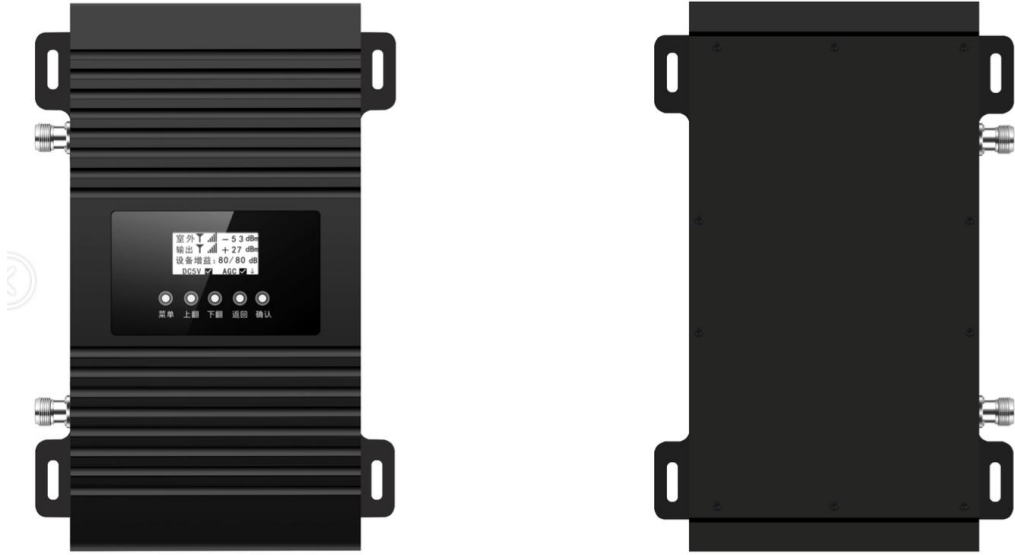


Gain	Output power
80-85dB	30dBm/2W

Model number	Frequency
AS-C (2W)	850MHz
AS-D (2W)	1800MHz
AS-W (2W)	2100MHz

2022 newly-developed high power signal repeater with WIFI monitoring and control function, support max 8 to 12 indoor antennas to cover over 2500sqm.

# Single Band Signal Booster



Gain	Output power
80-85dB	33dBm/2W

Model number	Frequency
AT-800L	800MHz
AT-G	900MHz
AT-D	1800MHz
AT-W	2100MHz

2022 newly-developed high power signal repeater with WIFI monitoring and control function, support max 8 to 12 indoor antennas to cover over 2500sqm.



# Dual Band Signal Booster



Color: Gold, white, black, rose gold

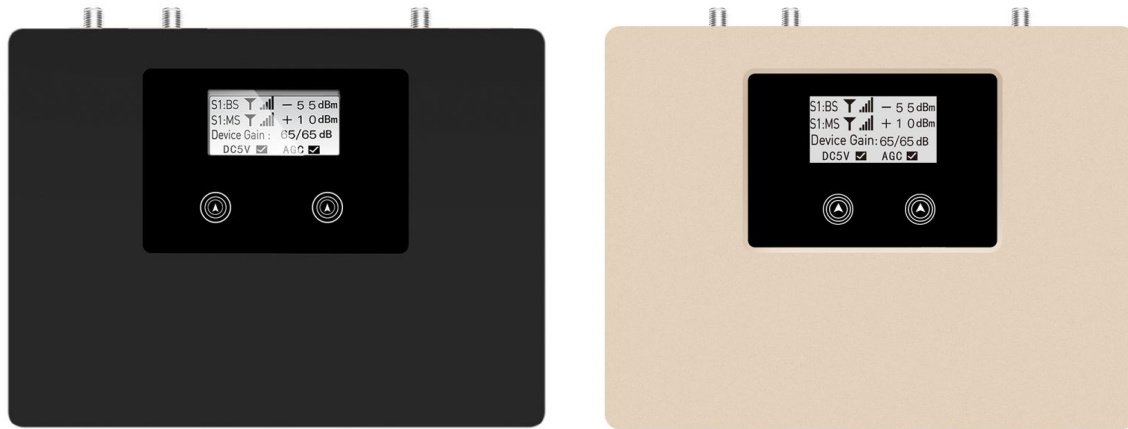


Gain	Output Power
70dB	22dBm

Model number	Frequency
JS-800/1800	800+1800MHz
JS-800/900	800+900MHz
JS-850/1900	850+1900MHz
JS-850/2100	850+2100MHz
JS-850/1700	850+1700MHz
JS-850/1800	850+1800MHz
JS-900/1800	900+1800MHz
JS-900/2100	900+2100MHz
JS-1800/2100	1800+2100MHz
JS-E900/1800	EGSM900+1800MHz

Tri-color industrial designed dual band signal repeater, has metal shell providing better radiation resistance, and its diverse frequency combinations provide more choice for user.

# Dual Band Signal Booster



Gain	Output Power
70dB	20dBm

Model number	Frequency
JS-800/1800	800+1800MHz
JS-800/900	800+900MHz
JS-850/1900	850+1900MHz
JS-850/2100	850+2100MHz
JS-850/1700	850+1700MHz
JS-850/1800	850+1800MHz
JS-900/1800	900+1800MHz
JS-900/2100	900+2100MHz
JS-1800/2100	1800+2100MHz
JS-800/EGSM900	800+EGSM900MHz

Mini dual band signal booster with WIFI monitoring and control function, provides easier usage and more convenient experience.

# Dual Band Signal Booster

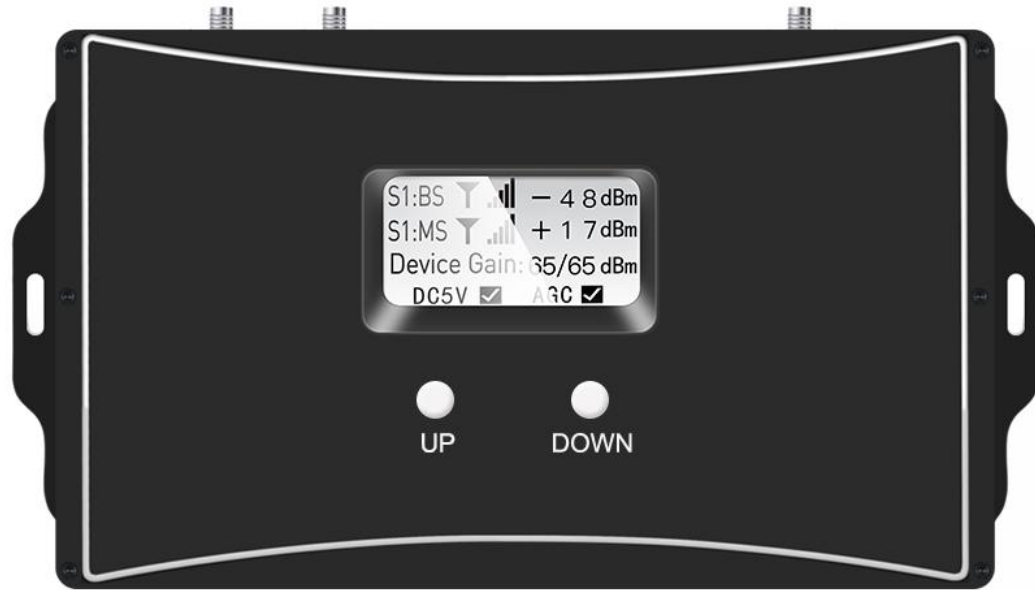


Gain	Output power
70dB	20dBm

Model number	Frequency
900/1800/P	900+1800MHz
900/2100/P	900+2100MHz
850/1900/P	850+1900MHz
850/1700/P	850+1700MHz
850/2100/P	850+2100MHz
900/2300/P	900+2300MHz
2300/P	2300MHz

ATNJ classic dual band signal repeater, easy to install and use, popular in American and EU markets.

# Dual Band Signal Booster



Gain	Output power
70dB	20dBm

Model number	Frequency
JS-800/1800	800+1800MHz
JS-800/900	800+900MHz
JS-850/1900	850+1900MHz
JS-850/2100	850+2100MHz
JS-850/1700	850+1700MHz
JS-850/1800	850+1800MHz
JS-900/1800	900+1800MHz
JS-900/2100	900+2100MHz
JS-1800/2100	1800+2100MHz
JS-800/E900	800+EGSM900MHz

Mini dual band signal booster with WIFI monitoring and control function, provides easier usage and more convenient experience.

# Dual Band Signal Booster



Gain	Output power
80dB	27dBm

Model number	Frequency
AS-800/900	800+900MHz
AS-800/1800	800+1800MHz
AS-800/2600	800+2600MHz
AS-850/1700	850+1700MHz
AS-850/1800	850+1800MHz
AS-850/1900	850+1900MHz
AS-850/2100	850+2100MHz
AS-900/1800	900+1800MHz
AS-900/2100	900+2100MHz
AS-1800/2100	1800+2100MHz
AS-1800/2600	1800+2600MHz
AS-2100/2600	2100+2600MHz

Middle power dual band signal repeater, could cover 300sqm (standard kit), and able to support max 8 to 12 indoor antennas to cover over 2000sqm.

# Dual Band Signal Booster

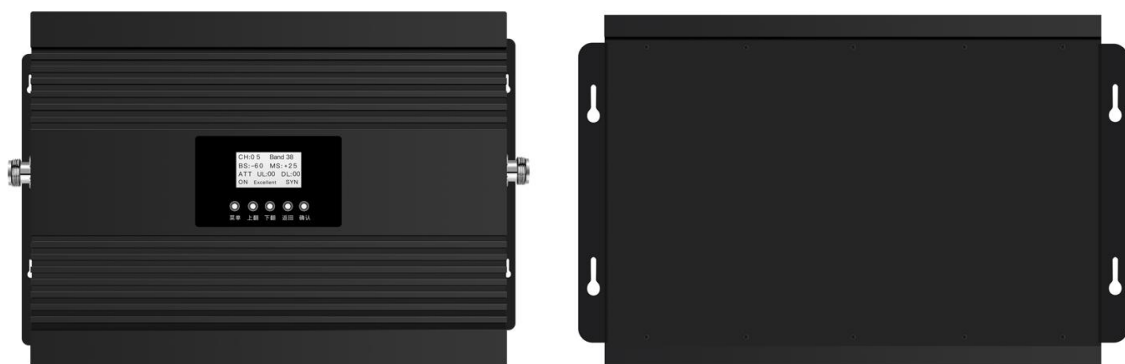


Gain	Output power
85dB	30dBm/1W

Model number	Frequency
AT-GD	900+1800MHz
AT-GW	900+2100MHz
AT-DW	1800+2100MHz

2022 newly-developed high power signal repeater with WIFI monitoring and control function, support max 8 to 12 indoor antennas to cover over 2000sqm.

# Dual Band Signal Booster



Gain	Output power
90dB	33dBm/2W

Model number	Frequency
AT-GD/H	900+1800MHz
AT-GW/H	900+2100MHz
AT-DW/H	1800+2100MHz

2022 newly-developed high power signal repeater with WIFI monitoring and control function, support max 10 to 15 indoor antennas to cover over 3000sqm.

# Tri Band Signal Booster



Gain	Output power
80dB	27dBm

Model number	Frequency
AS-900/1800/2100/H	900+1800+2100MHz
AS-800/900/2600/H	800+900+2600MHz
AS-850/1800/2100H	850+1800+2100MHz
AS-800/900/1800/H	800+900+1800MHz
AS-850/1700/1900/H	850+1700+1900MHz

Middle power dual band signal repeater, could cover 300sqm (standard kit), and could support max 8 to 12 indoor antennas to cover over 2000sqm.



# Tri Band Signal Booster



Gain	Output Power
70dB	20dBm

Model number	Frequency
NT-GDW	900+1800+2100MHz

ATNJ micro power tri band signal repeater, supports 2G+3G+4G signal amplification at the same time, available to cover 400-1000sqm.

# High Power Repeater Series



Gain	Output power
≥90dB	37-43dBm/5-20W
Model number	Frequency
HS-800	800MHz
HS-900	900MHz
HS-1700	1700MHz
HS-1800	1800MHz
HS-1900	1900MHz
HS-2100	2100MHz
HS-2600	2600MHz
HS-GD	900+1800MHz
HS-GW	900+2100MHz
HS-DW	1800+2100MHz
HS-GDW	900+1800+2100MHz

Industrial high power signal repeater 5W to 20W (37dBm to 43dBm), with digital module, WIFI monitoring and control, WAN connection, USB connection, suitable for large coverage like residential area, office building, supermarket, underground garage and rural areas.

## 5G Signal Repeater Features

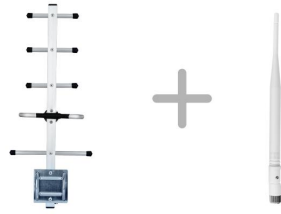
---

- . Support the network extension coverage of NSA and SA networking mode at the same time
- . MIMO dual channel input and output to improve system capacity and energy efficiency
- . Isolation detection of donor and retransmission antenna
- . Large AGC range
- . High speed digital ALC
- . Output power indication
- . Automatic Dormancy
- . When the equipment is self-excited, it will turn off automatically
- . Unique equipment uplink squelch function, which does not interfere with the base station
- . Automatic balance of uplink and downlink gain
- . Small size, light weight, beautiful appearance, high gain and low power consumption
- . Different output power levels to meet different coverage requirements
- . Low noise amplification of equipment to improve voice quality and reduce dropped calls
- . Convenient installation and opening

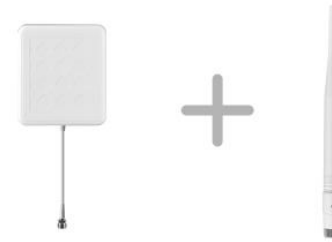
# Accessories Kit



Yagi+Ceiling antenna



Yagi+Penholder antenna



Panel+Penholder antenna



Stick +Penholder antenna



LPDA+Ceiling antenna



LPDA +Penholder antenna



Panel+Ceiling antenna

# Accessories Kit



PA-1



CAN-1



PB-1



YA-1



YA-2



SA-1



LP-1



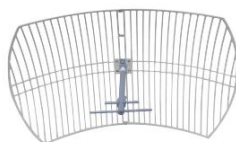
LP-2



OA-1



HA-1



VC-1

Model	Description	Gain	Gain /dBi
PA-1	Penholder Antenna		1
CAN-1	Ceiling Antenna		3
PB-1	panel Antenna		9
YA-1	Yagi Antenna		7
YA-2	Yagi Antenna		13
SA-1	Stick Antenna		1
LP-1	Log-periodic Antenna		10
LP-2	Log-periodic Antenna		12
OA-1	Omni Antenna		11
HA-1	15dBi Horizontal Polarization Grid Antenna		
VC-1	21dBi Vertical Polarization Beam Elevator Antenna		

# Splitter



ST-2

ST-3

ST-4

Model number	Description	Insertion loss/dBm
ST-2	two way splitter	3.3
ST-3	three way splitter	5.2
ST-4	four way splitter	6.5

# Coupler



Model number	Coupler	Coupler Insertion loss/dBm	Output Insertion loss/dBm
CP-5	5dB	5	2
CP-6	6dB	6	1.6
CP-7	7dB	7	1.2
CP-10	10dB	10	0.8
CP-15	15dB	15	0.6

# Cable



1/2 feeder



5D-FB cable



3D-FB cable

Frequency	Cable series	Insertion loss/M/dBm
900MHz	1/2 feeder	0.07
1800MHz	1/2 feeder	0.08
2100MHz	1/2 feeder	0.12
900MHz	5D cable	0.2
1800MHz	5D cable	0.305
2100MHz	5D cable	0.33
900MHz	3D cable	0.3
1800MHz	3D cable	0.48
2100MHz	3D cable	0.52

Model number	Meter	Description
CA-3D-5	5M	3D-FB cable
CA-3D-10	10M	3D-FB cable
CA-3D-20	20M	3D-FB cable
CA-3D-50	50M	3D-FB cable
CA-3D-100	100M	3D-FB cable
CA-5D-5	5M	5D-FB cable
CA-5D-10	10M	5D-FB cable
CA-5D-20	20M	5D-FB cable
CA-5D-50	50M	5D-FB cable
CA-5D-100	100M	5D-FB cable
CA-F	Customized	1/2feeder cale

# Connector

			
CN-1 F-female /N-male	CN-2 SMA/male-N/female	CN-3 SMA/male-N/male	CN-4 SMA/female-N/female
			
CN-5 SMA/female-N/male	CN-6 N/male -N/male	CN-7 N/female -N/female	CN-8 SMA/female-SMA/female





**Shenzhen ATNJ Communication Technology Co.,LTD**

[www.atnjtech.com](http://www.atnjtech.com)

**Contact person: Wave Luo**

**E-mail: [atnj88@szatnj.com](mailto:atnj88@szatnj.com)**

**Mobile/Wechat/Whatsapp: +86-18813582037**

**Skype: [wave.luo@szatnj.cn](https://www.skype.com/people/wave.luo@szatnj.cn)**

**T h a n k s   f o r   w a t c h i n g**